

SRE 23

Simple - Robust - Effective

The perfect boat for
day and evening





Always ready to go, this solar-powered boat is seductively quiet. The most spectacular moments are spent riding the bow while skimming the surface, or peacefully seated under the elegant shade.

Its versatility provides comfortable living spaces, perfect for frequent outings of a few hours. When you return, the boat is easy to clean, and no need to refuel. It is no coincidence that this design was voted No. 1 by more than 17,000 passengers with family and friends.



Solar-powered sailing provides a magical experience on the bow



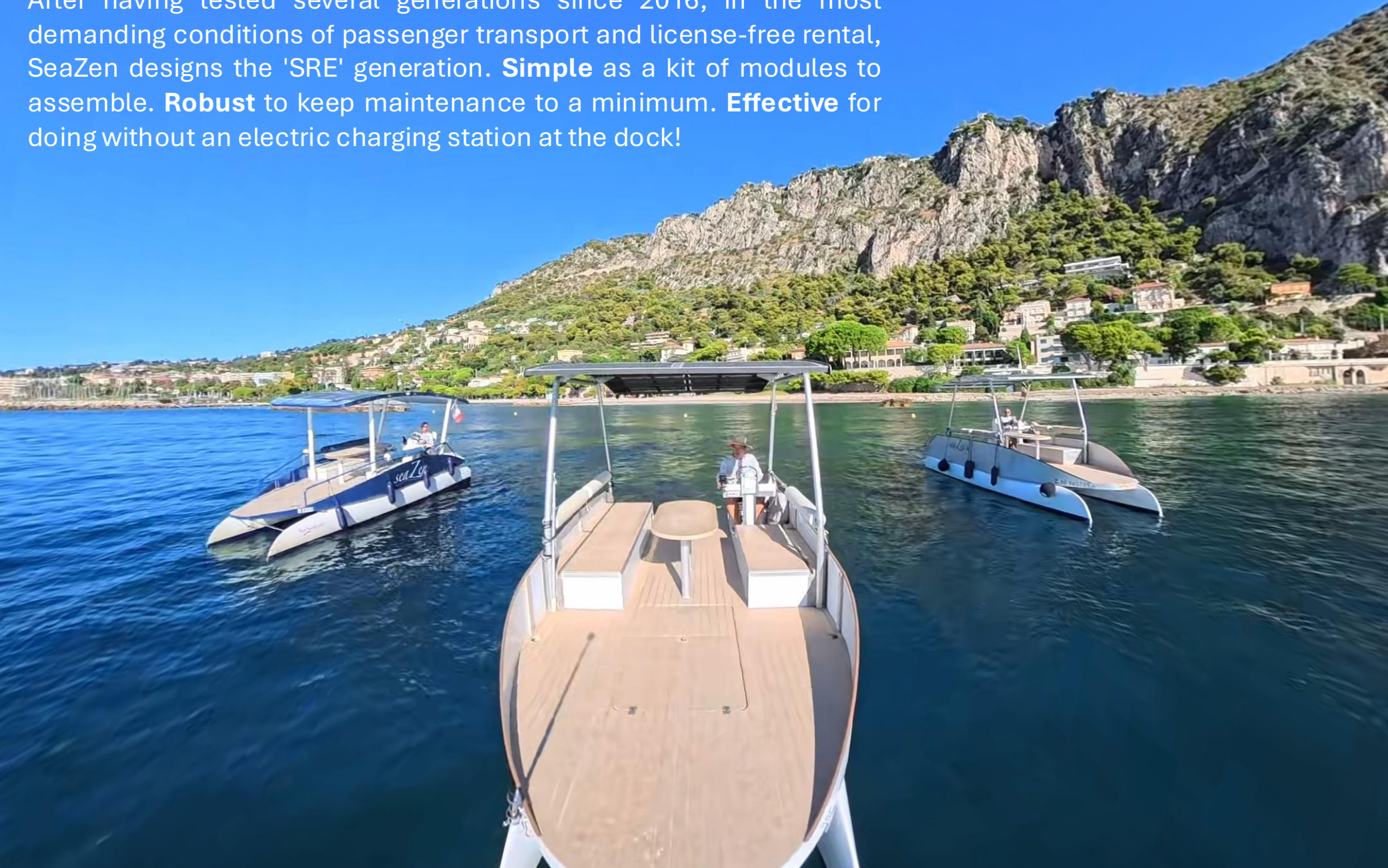
Sunbathing is more Zen on the king-size cork platforms at bow and stern



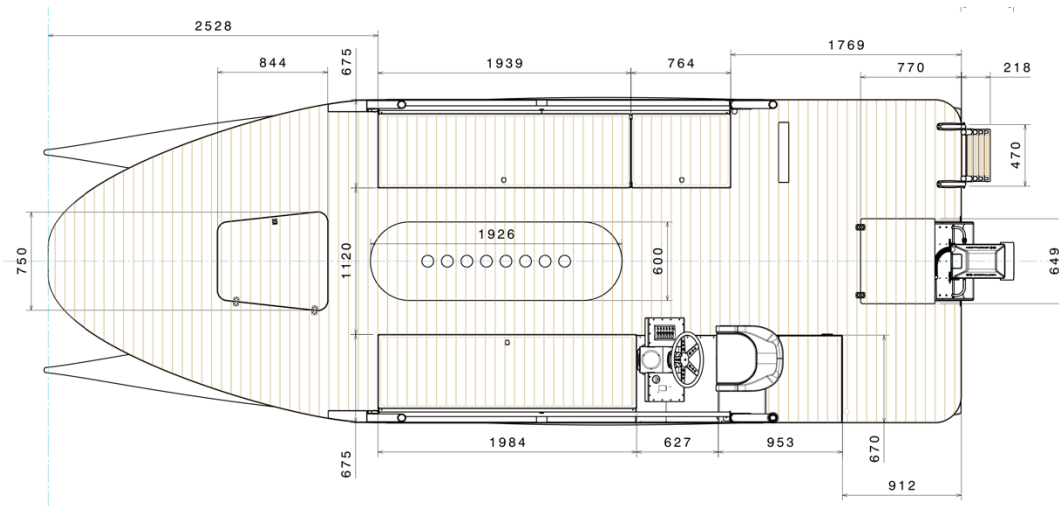
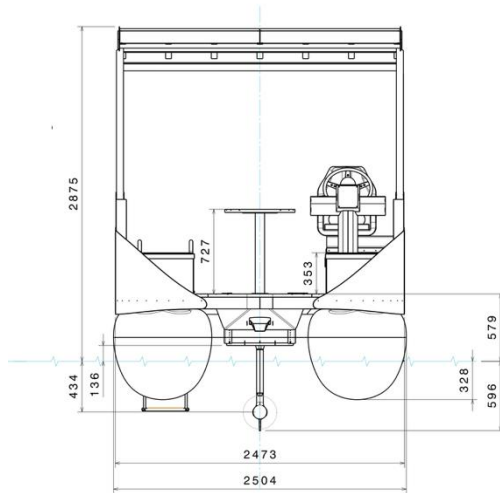
A comfortable lounge at the center of the catamaran, shaded under the canopy

Proven design

After having tested several generations since 2016, in the most demanding conditions of passenger transport and license-free rental, SeaZen designs the 'SRE' generation. **Simple** as a kit of modules to assemble. **Robust** to keep maintenance to a minimum. **Effective** for doing without an electric charging station at the dock!



Technical sheet



Size

Length	7 m
Width	2.5 m
Loaded displacement	1.8 T
Loaded draft	0.5 m
Light air draft	3 m

Performances

Engine	3 - 20 kW
Battery	5 - 23 kWh
Max. peak power	1.6 kWp
Hull speed	7 knots
Cruise speed	2 - 12 knots

CE marking

Cat.	Persons*	Charge*
C	9	675 kg
D	10	750 kg
Designed in Nice - Made in France		
Passenger Licensing		

* Depends on battery weight

Generic Accessories

2PZ	ABS louvred vent white 85x85 mm
1PZ	Electric panel w/automatic fuses and double LED
1PZ	Wall mount. black pole 100 cm 360 red/green light
1PCS	Single horn 12 V 210 mm
1PCS	Compact LED navigation light, right RAL 7042
1PZ	Compact LED navigation light, left RAL 7042
1PZ	Electric panel w/automatic fuses and double LED
2PCS	Automatic Bilge pump 38 l/m 12V
1PCS	RIVIERA compass 3" w/cover blue rose/grey body
1PCS	SS bow roller 393 x 52 mm
1PCS	Swivelling connection AISI 316 8 mm
6PCS	Aero aluminium cleat 158 mm
1PZ	Nylon belaying cleat black 175 mm
1PZ	Fabric single-seat grey cover 60x60x65cm 300D
1PZ	De Luxe ergonomic seat w/vinyl upholstery
6PZ	SS pull latch 38x40 mm
4PZ	Foldable hinge 68x42 mm
1PZ	Comfortable stainless steel bathing ladder
1PZ	Induction USB charger



Only the modules and options referenced by SeaZen allow you to obtain the CE marking, warranties and support.

The specifications and images of the models presented here are not contractual. We reserve the right to change the specifications of our models without notice.

“100% solar” motor-packages

Epropulsion 3KW Battery 5.38 kWh



As a challenger in electric propulsion, ePropulsion has risen to the top level in just a few years.

The presence of a fan generates a slight noise that is noticeable compared to other electric motors.

Torqeedo 6KW Battery 10,24 kWh



As a pioneer in electric propulsion, Torqeedo offers mature products. Recent acquisition by Yamaha strengthens maintenance network. Batteries are doubled to maintain a 50% load factor in full solar production.

Hyg motors 4KW Battery 5.38 kWh



Its carbon marine nozzle houses an innovative motorization and offers increased safety for swimmers. The motor design, without a central axis, prevents algae and other waste from disrupting propulsion, while optimizing flow. The absence of gears and seals, according to the manufacturer, makes it possible to free itself from the periodic maintenance imposed on conventional propeller engines and above all offers an incomparable silence.

Engine + direction packages



All engine packages include a motor with its full professional grade hydraulic steering and carefully selected adapters (screws or arms) for each engine as well as custom made brackets.

Only the modules and options referenced by SeaZen allow you to obtain the CE marking, warranties and support.

The specifications and images of the models presented here are not contractual. We reserve the right to change the specifications of our models without notice.

20-kW powercat motor-package (beta)

EPROPULSION certifies the integration of a 20-kW electric motor with electric trim and steering, a 23-kWh battery, as well as a 16 A shore charger (3.3 kW in 220V) with a remote connection for updates.

Regular inspection and maintenance operations must be planned in accordance with the schedule established by the manufacturer.

This e-Powercat can reach 12 knots, drive carefully!

Two additional high-quality 12 V batteries are selected by SeaZen: one dedicated to the service of the engine, the other to power auxiliary circuits, such as lighting and bilge pumps.



Only the modules and options referenced by SeaZen allow you to obtain the CE marking, warranties and support.

The specifications and images of the models presented here are not contractual. We reserve the right to change the specifications of our models without notice.

Solar energy configurations

Battery
5.4 kWh



Thanks to the solar range, the battery can be significantly reduced. The smaller the battery park, the simpler electrical maintenance. This is the essence of a "maintenance-less" design in electric boating.

This battery is chosen as standard in most of the configurations offered.

Solar canopy
1600 Wp



The 1600 Wp of photovoltaic panels have been more than enough since 2016 to ensure all the energy to transport several thousand SeaZen passengers without ever recharging at the electricity grid.

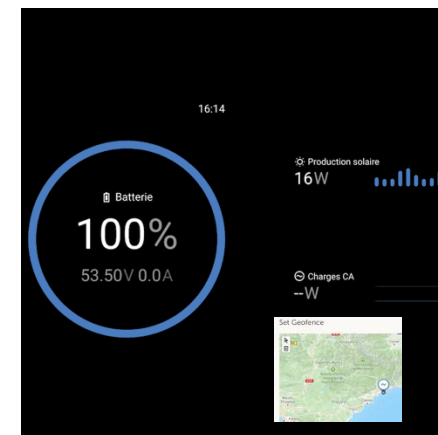
The photovoltaic cells placed on transparent supports are reminiscent of a canopy.

Solar bulwarks (beta)
580 Wp



2 photovoltaic panels of 290 Wp on the port and starboard sides reinforce the solar autonomy. The vertical position of the panels uses the albedo of the sun on the sea. The "shockproof" design isolates any impacts with LEDs. A locally damaged panel can continue to operate on unimpacted areas.

Remote Manager



For professional use, the remote management solutions integrated by SeaZen can help monitor the energy stored on the batteries, solar charging, the position of the boat with *geofencing alerts*, intrusion or collision video surveillance.

No subscription other than the SIM card for the 4G router.

Use cases



Escapade

Perfectly suited to owners seeking freedom, this configuration is ideal for easy getaways just a few miles from the port.

No time-consuming preparation is necessary: simply line the fridge (optional) – and you're ready to go. The table allows you to welcome in a friendly atmosphere, whether at anchor or by gliding peacefully on the water.



Professional

Ideal for operating under SeaZen license up to 9 passengers + 1 captain or 10 people for hire.

In order to be able to operate all day, 7 days a week all year round in the most touristic areas, the boat simplifies as much as possible unproductive cleaning times, and no need to recharge the battery or refuel!



Recreational fisherman

Thanks to its solar autonomy during the day, it can tow a trolling line for hours without even discharging the battery.

The deck is coated with a dirt-repellent, non-slip paint, for easy cleaning. For long days of angling in winter, it is possible to set up - as an option - a camper that will transform the boat into a tropical greenhouse.

Configurations

Use cases	Escapade	Professional	Fisherman	Powercat
Anti-slip paint deck			X	
Cork deck	X	X		X
Cork table + matching back cushions + 8 glass holders	X	X		X
Primer + antifouling	X			X
Brushed aluminum bulwark	X	X	X	X
Custom-colored bulkward				
Assembly and transport berth	X			
48 V battery charger & plug to the grit	X			
Front wave-breaking cushion				X
Low energy refrigerator	X			
Shower + 55 l tank	X			
Camper cabin: tropical cocoon				

Only the modules and options referenced by SeaZen allow you to obtain the CE marking, warranties and support.
The specifications and images of the models presented here are not contractual. We reserve the right to change the specifications of our models without notice.

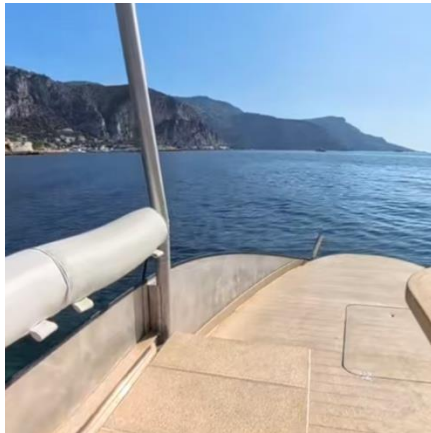
Detailed Options

Cork table + matching cushions + 8 glass holders



This selection of items includes the central table covered in cork, pierced with 8 stainless steel cup holders, the back cushions with their cover matching the cork of the bridge.

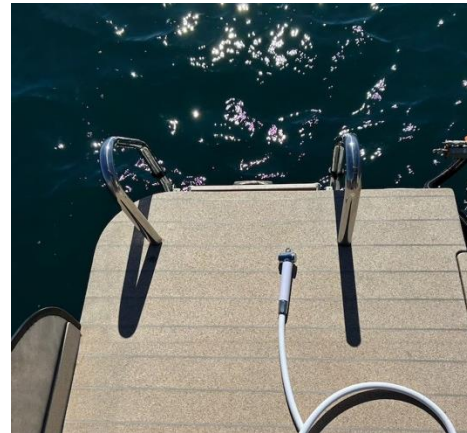
Cork deck with matching baseboards



The cork deck offers an excellent quality choice because it is non-slip, does not overheat in the sun. Easy to maintain, it can be washed with seawater.

The baseboards attached to the periphery of the bridge contribute to the aesthetics of the whole.

Hand shower



The handheld shower, located in the compartment facing the swimming platform, is fed by a 55-litre tank.

30 l refrigerator



This refrigerator is connected to the 12V auxiliary transformer. An automatic shut-off device is triggered as soon as other accessories consume too much power, such as 12V pumps or even a smartphone USB charger.



Industrial Manufacturing Quality



Commitments and deadlines

As a designer and integrator of boats, SeaZen has carefully selected 10 partners to bring the highest quality standards.

Components	Operations	Total time 3 months approx.
Floats	Manufacture hulls from the SeaZen mold	2 months
Aluminium structure	Manufacture structural modules from CAD files	
Photovoltaic panels	Manufacture solar panels with the required characteristics	
Cork deck	Manufacture and cut panels from a CAD file	
Accessories	Supply generic accessories ⚠️ Catalog availability not guaranteed	2 weeks
Battery	Supply maintenance-free batteries anywhere in the world	
Victron	Supply the electrical system components, manage a network of certified installers and maintain a telemetry portal.	
Engine	Supply an engine with localized maintenance or maintenance avoidance solutions	
Boat assembly	Assembly the Kit modules, accessories and electrics	From 1 month depending on options
Shipping	Ship with or without a crane depending on the facilities available at the destination	Depending on the destination
Documentation	Document and certify completion according to the selected configuration.	1 week



Price-quality

The SRE aims for the best level of quality-price thanks to:

- A new sales business model
- The industrial kit production method
- The list of adjustable options

Eco-design benefits



Electric navigation generates **energy savings compared to fossil fuels.**

More than 50% of the mass of the Kit is made of recyclable materials while **the costs of dismantling traditional boats are increasing** so much that some owners prefer to donate them today.



Solar-powered boats will help avoid significant infrastructure costs compared to a scenario in which all boats were powered exclusively by batteries.

Designed to last

A white catamaran boat with a solar panel canopy is shown from a rear-quarter perspective, moving across the water. The boat has a tan deck and a black solar panel array on the canopy. A person is visible at the helm. In the background, there is a large, multi-story building with a red facade and white trim, surrounded by trees on a hillside.

More and more boating areas are being closed to combustion-engine boats in order to protect biodiversity. A quiet, zero-emission boat means more freedom ahead.

The kit's design facilitates any local maintenance and, most importantly, ensures that over time, the outboard motor and energy storage system can be upgraded more easily.

Over the long term, the “maintenance-free” approach minimizes reliance on after-sales service, particularly in remote areas.

Try it from home

SeaZen is always happy to welcome you to Beaulieu-sur-Mer for sea trials.

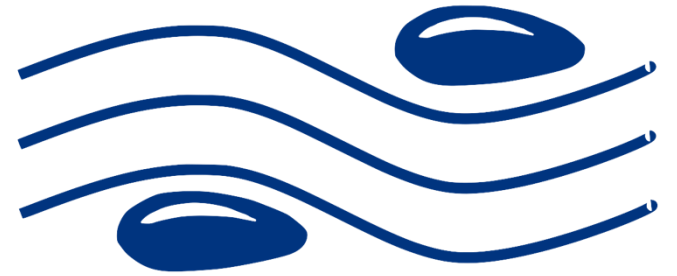
If you want to try our boats while staying at home, that's also possible!

Our 360° videos are available to immerse you in a real solar navigation experience.






SEAZEN



The world's first solar boating company

SeaZen is the birth of a new kind of company, which revolutionizes the uses of yachting while offering profitable and proven solutions throughout the value chain.

As a designer-builder, operator, and franchisor, SeaZen produces a catamaran designed primarily for 100% solar-powered autonomy and a new lifestyle. Its proven business model allows professionals to invest and owners to enjoy sailing more than ever before.



Perfectly suited to operate 10 private tours per day in non-stop rotations, this boat offers a profitable business model at a reasonable price for its passengers.

Private Tour Operator

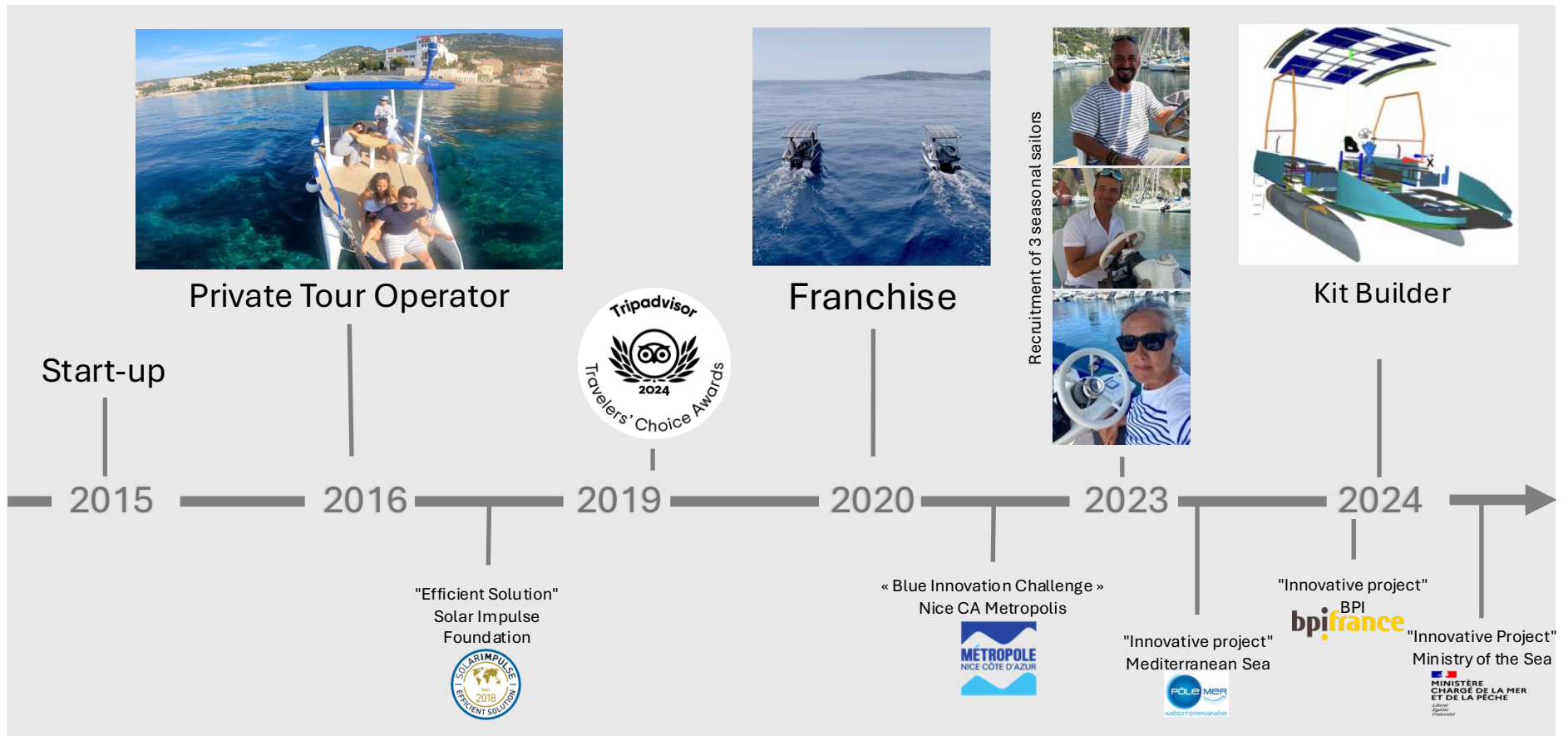
Partner of professionals



1. **As a business introducer**, I use the VR headset to present a 360° solar navigation experience without the need for a demonstration boat.
2. **As a distributor**, I increase my added value by assembling kits.
3. **As a licensee**, I open my profitable nautical base from the first boat.

A start-up that goes from rental in 2016 to a manufacturer-integrator

Solar yachting represents a completely new market. Thanks to a solid and prudent shareholding, and thanks to the renewed confidence of many "innovation juries", SeaZen has gone from being a private tour operator in Beaulieu to a franchisor and then to a designer-integrator of a passenger boat, made in France.



The energy transition is **50% technology and 50% change of use**. That's why the team develops its boats and B2B solutions for professionals at the same time.



Guillaume Jacquet-Lagrèze
Founder

"Become an ambassador for solar navigation and give a new meaning to your career. SeaZen helps professionals develop a profitable business based on a proven vision and business model. Joining the team also means sharing a unique experience that continues to be enriched."



Mylène Muller
Licensed in Juan les Pins

"Discover the coastline from the sea as you've never experienced it before: with a solar boat. Together we will discover the history and life of the Cap d'Antibes peninsula, and admire exceptional landscapes, now preserved. You will live a Zen, elegant and environmentally friendly experience."



Éric Magré
Naval Architect and Maritime Expert

"Yes, you can switch to solar energy! Three generations of boats operated in the harshest rental conditions provide unique feedback. Our catamarans are particularly accomplished. Simple, robust and efficient, they offer unprecedented pleasure on a boat of this size."

Since its inception, SeaZen's structure has enabled its team to grow at the same speed as the market, while strengthening its **strategic partnerships with more than 10 "industrials of key specialties"**.